

RaspBee

Data sheet

- plug-in module for Raspberry Pi
- enables the operation as a ZigBee gateway with the software deCONZ
- based on ATmega256RFR2 from Microchip (Atmel) and supports own firmware with integrated boot loader
- preconfigured with ZigBee firmware



Technical Data



Electrical specifications

Radio module	deRFmega256-23M12
Node number	up to 200 nodes
Power supply	4.5 - 5.5 V DC
Antenna	Chip Ceramic onboard
Sensitivity of reception	-105 dBM (250 kBit / s)
Data rate	250 kbit / s, 500 kbit / s, 1 Mbit / s, 2 Mbit / s
Interface	UART, GPIO



Environmental information

Humidity	25% bis 80%
Storage temperature	- 40 °C - 85 °C
Operating temperature	- 40 °C - 85 °C



Compatibility

Protocol	ZigBee
Profile	ZigBee Pro

Particular markers

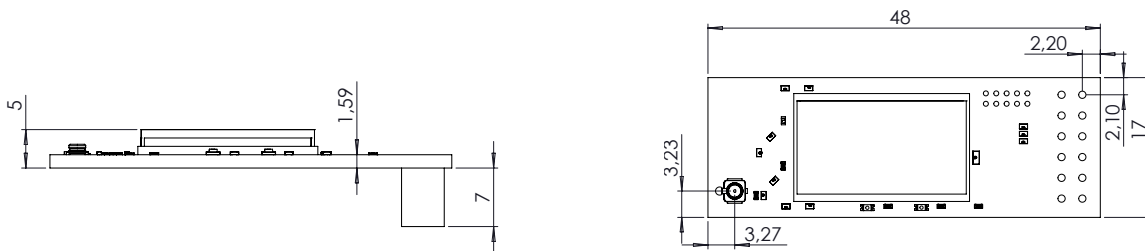


Further Information

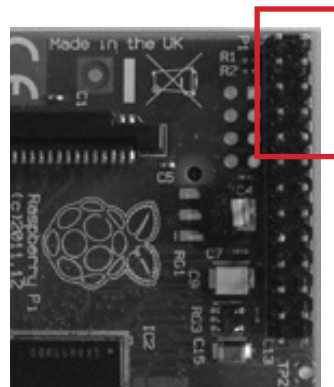
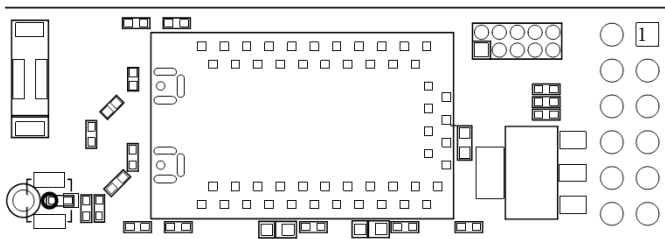
This product contains FCC-ID: XVV-MEGA23M12.

Hereby, dresden elektronik ingenieurtechnik gmbh declares that the radio equipment type RaspBee is in compliance with directive 2014/53/EU. The full text of the EU declaration of conformity is available at the following internet address: www.dresden-elektronik.de

Dimensions in mm



Pin assignment



Scope of delivery

RaspBee

BN-600052

Contact

dresden elektronik ingenieurtechnik gmbh
Enno-Heidebroek-Str. 12
01237 Dresden | Germany

Tel: +49 351 31850-0 Fax: -10
wireless@dresden-elektronik.de
www.dresden-elektronik.de